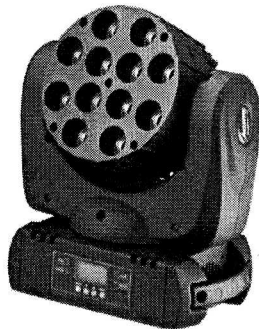




User Manual



Model: LED MIX 400(12*10w Quad)

Code: SH-LED1210B

Contents

Section 1. Getting Started

- ✧ Unpacking
- ✧ Safety Instruction

Section 2. Set Up

- ✧ Installation
- ✧ Controlling Board
- ✧ Machine Connection

Section 3. Troubleshooting

- ✧ Troubleshooting

Section 4. Reference

- ✧ Control Menu
- ✧ DMX Protocol
- ✧ Specification

Section 1. Getting Started

- ✧ Unpacking
- ✧ Safety Instruction

Unpacking

- 1pc Fixture
- 1pc User Manual
- 1pc Power Cable
- 1pc Signal Cable
- 1pc Fast-lock Omega Clamp (1/4 turn)

Thanks for using our LED moving beam range. Carefully unpack the box and check the contents to ensure that all parts are present and in good conditions. If anything looks as if it has been damaged in transit, notify the shipper immediately and keep the packing material for inspection. Again, please save the carton and all packing materials. If a fixture must be returned to manufacturer, it is important that the fixture be returned in the original manufacturer box and packing.

Safety Instruction



For your safety, please read this user manual carefully before

- Please conserve this manual as operation guidance. If you sell this product to other user, please make sure that they also receive this user manual.
- Always make sure that you are connecting to the proper voltage and that the line voltage you are connecting to is not higher than that stated on the decal or rear panel of the fixture.
- The fixture is intended to indoor use only. To prevent risk of fire or shock, do not expose fixture to rain or moisture. Make sure there are no flammable, explosive or corrosive materials surrounded in 0.5meter while operating.
- The unit must be installed in a location with adequate ventilation, at least 2m away from adjacent surfaces. Be sure that no ventilation slots are blocked.
- Do not operate at ambient temperatures higher than 104°F (40°C) .
- Safe wire should be used to install machine. Bearing of safe wire should be 3times of the machine weight. Complimentary signal cable transmits signals to 20 unit fixtures at most. Signal amplifier is a must to connect more fixtures. Sectional area of complimentary power cable is 1 mm². In daisy chain model, it allows to connect to 4 fixtures at most.
- Always disconnect from the power source before servicing or replacing fuse/lamp and be sure to replace with same fuse/lamp size and type. Cut off power before moving, repairing and cleaning the machine.
- Secure fixture using a safety chain and carrying handles. Never carry the fixture by its cord.
- In case of failure or malfunction occurred, stop using the unit immediately.
- Repairs carried out by unskilled people can lead to damage or malfunction. Buy the same spare parts/components from manufacturer directly.
- To avoid electric shock, all fixtures must be connected to circuits with a suitable ground. Make sure the power cord is never crimped or damaged. Do not power on and power off the fixture in a short time. For your safety, do not touch fixture when running.
- When use DMX controller, please make sure that there is no interference sources(e.g. intercom, high frequency radio waves and radiation source)

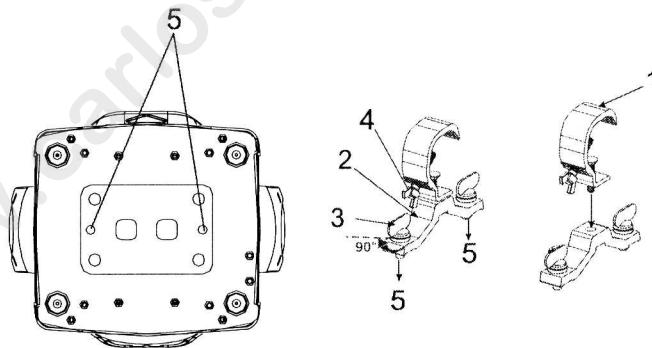
Caution! There are no user serviceable parts inside the unit. Do not open the housing or attempt any repairs yourself. In the unlikely event your unit may require service, please contact your local distribution or after-sale service center.

Section 2. Set Up

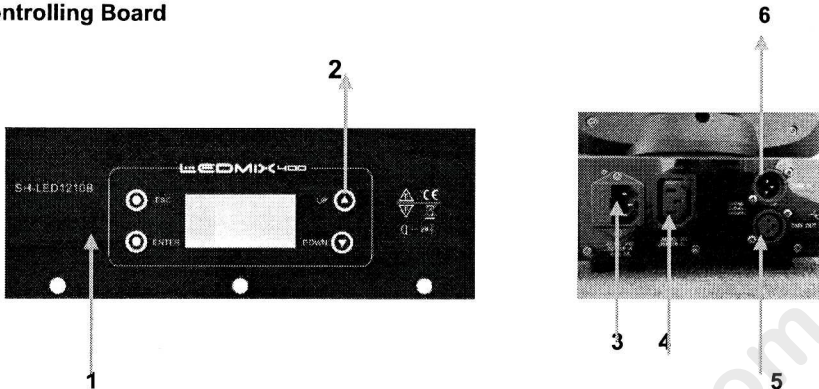
- ✧ Installation
- ✧ Controlling Board
- ✧ Machine connection
- ✧ X/Y shaft tightness adjust

Installation

This machine should be mounted through the screw holes of truss. Safety wire is a must to fix fixture well. Make sure truss and safety wire have strong load capacity to bear 3 times weight than fixture at least. This machine should be installed by qualified technician.



Controlling Board



1. LCD Display Panel

2. Button

MENU	Switch Menu Function
UP	Upper page Down page
DOWN	Upper page Down page
ENTER	Enter into selected function

3. Power Input

Connect to supply power to machine(attention: use the same voltage only)

4. Power Output

Connect to supply power to other machine

5. DMX Signal Output

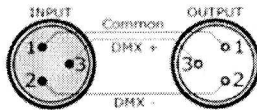
Transmit DMX signal to next machine, please use 3 pin XLR signal cable.

6. DMX Signal Input

Use DMX signal to control machines, please use 3 pin XLR signal cable.

Cable Connectors

Cables must have a male XLR connector on one end and a female XLR connector on the other end.



A word on termination: DMX is a resilient communication

protocol,

however errors still occasionally occur. Termination reduces signal errors, and therefore best practices include use of a terminator in all circumstances. If you are experiencing problems with erratic fixture behavior, especially over long signal cable runs, a terminator may help improve performance.



To build your own DMX Terminator Obtain a 120-ohm, 1/4-watt resistor, and wire it between pins 2&3 of the last fixture. They are also readily available from specialty retailers.

Section 3. Troubleshooting

Problem	Probable cause(s)	Remedy
No response from fixture when power is applied	No power to fixture	Check power cables
	Primary fuse blown	Replace fuse
	Secondary fuse blown	Replace fuse
Fixture resets but does not respond correctly to controller(DMX mode operation)	Controller not connected	Connect controller
	Incorrect addressing of the fixtures	Check address setting on fixture and controller
	Bad data link connection	Inspect cables and correct poor connections and/or broken cables.
	Conflict between tracking and vector control	Eliminate scene cross-fade on controller
	Data link not terminated	Insert termination plug in output of last fixture
	Defective fixture or 2 devices transmitting on link	Bypass fixtures one at a time until normal operation is regained:unplug both connectors and connect them directly together
Colors cannot be mixed	Random color mixing is on	Turn off random color mixing
Fixture does not reset correctly	Electronic or mechanical failure	Contact service technician
No light, lamp cuts out intermittently,or burns out too quickly	Lamp missing or blown	Disconnect fixture and replace lamp
	Fixture or lamp is too hot	Allow fixture to cool. If problem persists,contact service technician

Section 4. Reference

- ✧ Control Menu
- ✧ DMX Protocol
- ✧ Specification

Control Menu

MENU UP/ DOWN	MENU DMX512	ENTER UP /DOWN	DMX15CH	Enter→UP/ DOWN to set up address value→ENTER
	MENU Manual	ENTER→UP/DOWN to select from CH1 to CH15→ENTER		
	MENU LED- FUNC	ENTER UP/ DOWN	LED-FUNC Gradual	ENTER→run stand-alone
			LED-FUNC Jump	ENTER→run stand-alone
			LED-FUNC Flash	ENTER→run stand-alone
			LED-FUNC LED-Auto	ENTER→run stand-alone (gradual-jump-flash-builtin macro)
			LED-FUNC Sound	ENTER→sound active
			LED-FUNC LED-SP	ENTER→UP/DOWN to speed adjust (0-255 from fast to slow) →ENTER
			LED-FUNC FUN-Off	ENTER→LED function off
	M-Test	UP /DOWN	M-Test AUTO-1	ENTER→Auto-1
			M-Test AUTO-2	ENTER→Auto-2
			M-Test AUTO-3	ENTER→Auto-3
			M-Test AUTO-4	ENTER→Auto-4

MEN U M-Test t	ENTER UP/ DOWN	M-Test AUTO-5	ENTER→Auto-5	
		M-Test AUTO-6	ENTER→Auto-6	
		M-Test AUTO-7	ENTER→Auto-7	
		M-Test AUTO-8	ENTER→Auto-8	
		M-Test ALL	ENTER→Auto-1 to Auto-8	
		M-Test MOT-Off	ENTER→Auto Off	
MEN U SYS- SET	ENTER UP/ DOWN	SYS-SET DMX-OUT	ENTER→UP/DOWN to select YES/NO→ENTER. In Master-Slave model, YES stands for Master fixture turns ON signal output; NO stands for Master fixture turns OFF signal output.	
		SYS-SET Pan-R	ENTER→UP/DOWN to select YES/NO→ENTER. YES stands for X axis rotates counter-clock-wise, NO stands for X axis rotates clock- wise.	
MEN U SYS- SET	ENTER UP/ DOWN	SYS-SET Tilt-R	ENTER→UP/DOWN to select YES/NO→ENTER. YES stands for Y axis rotates counter-clock-wise, NO stands for Y axis rotates clock- wise.	
		SYS-SET RST-SYS	ENTER→UP/DOWN to select YES/NO→ENTER. YES stands for RESET, NO stands for current status.	
		SYS-SET Password	Press ENTER UP/ DOWN	YES to set up three-digit-number password. ENTER→UP/DOWN to choose digit(0-9)→ENTER. Default password is 680. Power off fixture to active password lock function.
				NO to unlock password. ENTER→ , UP/DOWN to key in password→ENTER. Default password is 680
MEN U RESE T	→ ENTER			

DMX Control (15CH)

CH	Function	Function Instruction
CH1	X	0-255 0-630°
CH2	Y	0-255 0-180°
CH3	X16 Bit	0-255
CH4	Y16 Bit	0-255
CH5	Dimmer	0-255 from dark to bright
CH6	R	0-255 from dark to bright
CH7	G	0-255 from dark to bright
CH8	B	0-255 from dark to bright
CH9	W	0-255 from dark to bright
CH10	Flash	0-255 from slow to fast
CH11	Color Mix	
CH12	Stand-Alone/ Sound-Active	2-60gradually, 61-120 jump,121-180 gradually+jump, 181-240 sound-active+flash,241-255 sound-active+ jump
CH13	Stand-Alone Speed Adjust Sound Volume Adjust	0-255 from fast to slow
CH14	X, Y Speed Adjust	0-255 from fast to slow
CH15	Reset	0-254 off, 255 reset after 2 second intervals

Master-Slave Control Model:

Master and slave: select one machine as master, press the menu to choose the function

you want(Sound or AUTO MODE). Set other machine under DMX address. Connect machines one by one by DMX cable. The slave machines will run the same as master machine, function keep synchronism as master machine.

Controller to machines: all machines are set to same DMX address, or different DMX address,

using DMX cable to connect machines& controller, all machines will be controlled by controller.

Considering the compatibility among the machines and controllers.

Comment: Press MENU to back to the last option. Press ENTER to save.

How to erase password: Please press MENU→UP/ DOWN→MENU
SYS-SET→ENTER→UP/ DOWN→SYS-SET Password→ENTER→UP/
DOWN→NO→ENTER→password(default 680)→ENTER

Specification:

Voltage: AC110V-240V

Frequency: 50/60Hz

Rated Power: 150W

LED: 12pcsX10W RGBW 4in1

Pan/Tilt: 630°/180°,Electronic Correction

Control: DMX512

Channel: 15CH

Control Mode: DMX/Sound Active/Auto/ Master-Slave/Manual

Level of Protection: IP20

Stock: Clean and Dry Place

Running Temp.: 0°C-40°C

Package Dimension: 280*280*260mm

www.carlosmendoza.com.mx