

The logo for METEOR SOLAR LED LIGHTING is centered on the right side of the image. The word "METEOR" is written in a bold, white, sans-serif font, with the letter "O" highlighted in a bright yellow. Below "METEOR", the words "SOLAR LED LIGHTING" are written in a smaller, white, all-caps, sans-serif font. The background of the entire image is a dark, almost black, gradient with a complex geometric pattern of overlapping, nested, zig-zagging lines in shades of grey and white, creating a sense of depth and movement.

**METEOR**  
SOLAR LED LIGHTING

[www.carlosmendoza.com.mx](http://www.carlosmendoza.com.mx)

[www.meteor-lighting.com](http://www.meteor-lighting.com)

***It is the right time to think about renewable energy alternatives***

More than ever before, it is time to find environmentally sound renewable energy alternatives. Meteor is one of a few companies that take the preservation of the environment to heart. In fact, Meteor develops, markets and distributes solar LED lights and other lighting products that more than match conventional architectural grade lights for quality and performance, with no wiring required. Meteor solar ground and paver lights make use of cleaner solar power technology in an innovative, sun-powered and self-contained design.

[www.carlosmendoza.com.mx](http://www.carlosmendoza.com.mx)



## *What is solar energy?*

### ***Harnessing solar energy***

Solar energy or sun light is the power source used for Meteor's paver and ground lights. Each Meteor solar LED paver/ground light unit is completely self-contained and self-powered, needing no external power and emitting no harmful CO<sub>2</sub> to the environment. Simple to use, with no wiring required, Meteor Light can be easily incorporated into new or existing designs. This means that Meteor lights can be installed using the same techniques and by the same workers who install the brick-work, paving or flooring material.

#### **SOLAR PANEL**

Type ..... Crystalline panel  
Efficiency ..... 12%~15%  
Lifetime ..... Minimum 20 yrs

#### **LEDs**

Lifetime ..... 100000 hrs  
Intensity (mcd) ..... 3000~7000 mcd  
Luminance (lux) ..... 30~300 lux  
Power consumption ..... 1.8 V~3.3 V

## Not your typical solar LED light

Meteor Solar LED lights are not your standard DIY solar lights that are planted in and around the garden or wall mounted. Meteor's Stainless steel Architectural grade lighting fixtures last for up to 10 years. Superior to most conventional lights, Meteor products are different to DIY solar lights. Furthermore, they compare favorably to conventional Architectural LED ground lights.

The resiliency of the materials utilized in Meteor Lights makes them suitable for high-end construction projects. The units have an SUS304 stainless steel cover, reinforced anti-skid glass outer construction that gives them a high load tolerance (able to withstand 4 metric tons of pressure). The lights are 100% waterproof (with IP68 certification) and utilize an ultracapacitor, which extends the power storage capacity from 1 to 2 years (for traditional batteries) to 7 to 10 years. Easy to install, replacement of the units is just as simple and does not affect the initial installation. The lights are also compliant with RoHS as well as meeting ISO quality standards. Meteor Solar LED Lights use the same components as architectural grade conventional lights. With high load tolerance, submersible attributes, power storage system that does not require batteries, LED light source and Tier 1 solar panels, these are Solar LED lights you have never seen before!

Lighting efficiency progress from daytime to night time:



### Anti-theft Anchor Plate

Every Meteor Solar LED lights come equipped with an anti-theft Anchor Plate. These plates not only deter theft, they also help prevent post-installation movement due to erosion or frost heaves.



Take a closer look at the comparison charts provided:

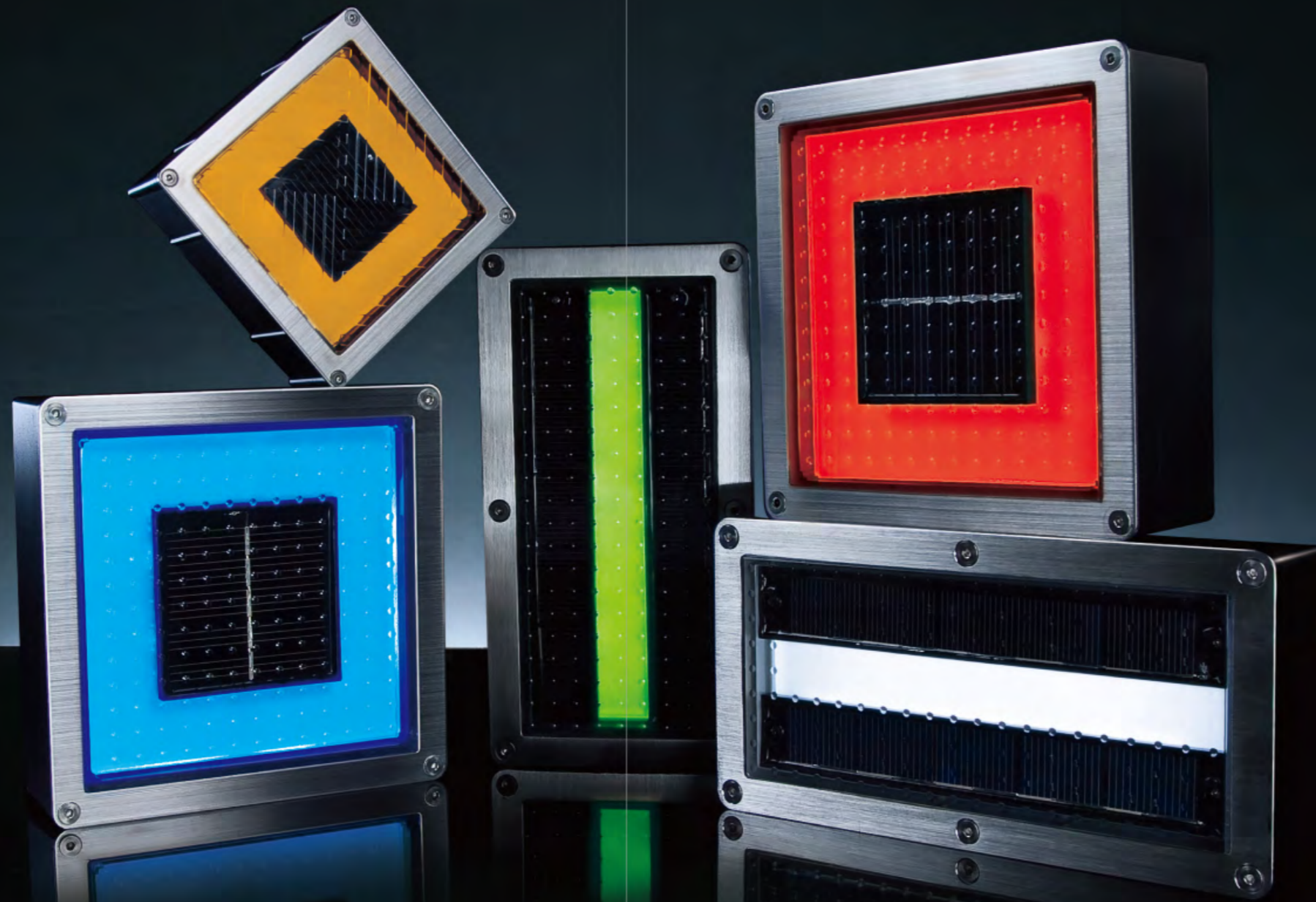
DIY SOLAR PRODUCT		METEOR SOLAR LED LIGHT
Plastic	<b>MATERIAL</b>	SUS304 stainless steel, cast aluminum
Plastic	<b>LENS</b>	GE high light permeable polycarbonate, high tensile tempered glass
Tier 2, tier 3 or recycle solar panel	<b>SOLAR PANEL</b>	Tier 1 high efficiency solar panel
Battery	<b>POWER STORAGE</b>	Ultracapacitor
None	<b>IP RATING</b>	IP68
No	<b>OPTIC DESIGN</b>	Yes
1-2 years	<b>LIFE SPAN</b>	7-10 years
Low	<b>LOAD TOLERANCE</b>	1-4 tons
Only function-driven	<b>APPEARANCE</b>	Functional and designed
5~6 hours	<b>OPERATING TIME</b>	Minimum 12 hours (fully charged)

CONVENTIONAL GROUND LIGHT		METEOR SOLAR LED LIGHT
SUS304 stainless steel	<b>FINISH</b>	SUS304 stainless steel
Cast aluminum	<b>HOUSING</b>	Cast aluminum
High tensile tempered glass	<b>LENS</b>	High tensile tempered glass, GE high light permeable polycarbonate
LED	<b>LIGHT SOURCE</b>	LED
Yes	<b>IES FILE</b>	Yes
IP65~IP68(less often)	<b>INGRESS PROTECTION</b>	All meet the IP68 standard
Very high	<b>PRICING</b>	1/2 of conventional ground light price
Very high	<b>TOTAL INSTALLATION</b>	Low

Needed	<b>TRANSFORMER</b>	No
Needed	<b>WIRING</b>	No
Needed	<b>ELECTRICIAN</b>	No
Very High	<b>LABOR FEE</b>	Minimum
Very often	<b>MAINTENANCE</b>	Minimum
Yes	<b>UTILITY BILL</b>	No



*Green lighting  
that comes in  
many colors!*



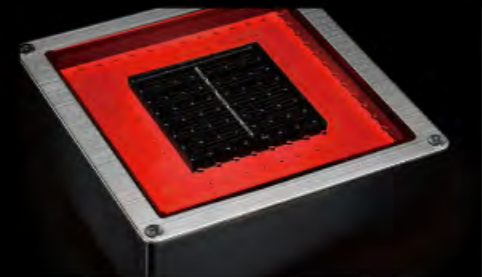
*Lighting is about defining a mood, creating an atmosphere, setting a scene.*

There is an art to good lighting. Brilliant, soft, transcending and romantic, Meteor LED lights are designed to suit different atmospheric preferences. From subtle hues and soft ambient lighting to sharp focus points and dramatic structural lighting, different styles are achieved by adjusting the depth and angles at which the lights are placed in the case and by the type of pattern and/or finish of the high tensile tempered glass cover.

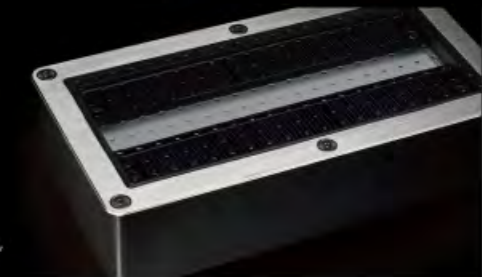


SH130C  
Color - Lux (average)  
White - 30, Amber - 25,  
Red - 70, Blue - 20, Green - 60

**A more responsible and environmentally conscious future is not only possible, it already exists. What is more, it can be done in style too!**



SH170C  
Color - Lux (average)  
White - 35, Amber - 25,  
Red - 65, Blue - 25, Green - 50



SH180C  
Color - Lux (average)  
White - 55, Amber - 40, Red - 80,  
Blue - 35, Green - 90

### SH130C

- paver light

<b>Size</b>	Edge L: 4.01" / 104 mm H: 1.81" / 46 mm
<b>Weight</b>	0.44 kg / 0.968 lbs
<b>Housing</b>	Stainless steel (SUS304), cast aluminum
<b>Lens</b>	GE super light permeable PC
<b>Lighting output</b>	Permanent
<b>LED pcs</b>	4 pcs
<b>Finish</b>	Brushed/polished stainless steel

<b>Switch</b>	Auto
<b>Operation time</b>	Minimum 12 hrs (fully charged) 4~8 hrs (overcast)
<b>Full charge time</b>	6 hrs (direct sunlight)

### SH170C

- paver light

<b>Size</b>	Edge L: 6.05" / 154 mm H: 2.1" / 53 mm
<b>Weight</b>	1.1 kg / 2.42 lbs
<b>Housing</b>	Stainless steel (SUS304), cast aluminum
<b>Lens</b>	GE super light permeable PC
<b>Lighting output</b>	Permanent
<b>LED pcs</b>	8 pcs
<b>Finish</b>	Brushed/polished stainless steel

<b>Switch</b>	Auto
<b>Operation time</b>	Minimum 12 hrs (fully charged) 4~8 hrs (overcast)
<b>Full charge time</b>	6 hrs (direct sunlight)

### SH180C

- paver light

<b>Size</b>	L: 7.9" / 200 mm W: 3.9" / 100 mm H: 2" / 50 mm
<b>Weight</b>	1.15 kg / 2.54 lbs
<b>Housing</b>	Stainless steel (SUS304), cast aluminum
<b>Lens</b>	GE super light permeable PC
<b>Lighting output</b>	Permanent
<b>LED pcs</b>	15 pcs
<b>Finish</b>	Brushed/polished stainless steel

<b>Switch</b>	Auto
<b>Operation time</b>	Minimum 12 hrs (fully charged) 4~8 hrs (overcast)
<b>Full charge time</b>	6 hrs (direct sunlight)

*There is an art to good lighting*



## SH200C

- ground light

<b>Size</b>	Top diameter: 2.7" / 69 mm Bottom diameter: 2.4" / 60 mm H: 2.2" / 55 mm
<b>Weight</b>	0.25 kg / 0.55 lbs
<b>Housing</b>	Stainless Steel (SUS304), cast aluminum
<b>Lens</b>	GE super light permeable PC
<b>Lighting output</b>	Permanent
<b>LED pcs</b>	4 pcs
<b>Finish</b>	Brushed/polished stainless steel

<b>Switch</b>	Auto
<b>Operation time</b>	Minimum 12 hrs (fully charged) 4~8 hrs (overcast)
<b>Full charge time</b>	6 hrs (direct sunlight)

## SH220C

- ground light

<b>Size</b>	Top diameter: 5.56" / 141 mm Bottom diameter: 3.94" / 100 mm H: 2.56" / 65 mm
<b>Weight</b>	0.95 kg / 2.09 lbs
<b>Housing</b>	Stainless Steel (SUS304), cast aluminum
<b>Lens</b>	Anti-skid reinforced glass
<b>Lighting output</b>	Permanent
<b>LED pcs</b>	6 pcs
<b>Finish</b>	Brushed/polished stainless steel

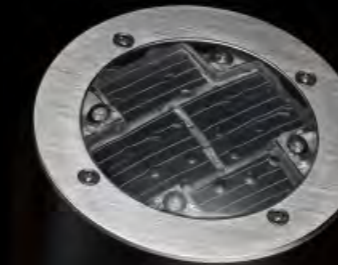
<b>Switch</b>	Auto
<b>Operation time</b>	Minimum 12 hrs (fully charged) 4~8 hrs (overcast)
<b>Full charge time</b>	6 hrs (direct sunlight)

## SH230C

- ground light

<b>Size</b>	Diameter: 6.89" / 175 mm H: 4.86" / 124 mm
<b>Weight</b>	1.71 kg / 3.76 lbs
<b>Housing</b>	Stainless Steel (SUS304), cast aluminum
<b>Lens</b>	Anti-skid reinforced glass
<b>Lighting output</b>	Permanent
<b>LED pcs</b>	6 pcs
<b>Finish</b>	Brushed/polished stainless steel

<b>Switch</b>	Auto
<b>Operation time</b>	Minimum 12 hrs (fully charged) 4~8 hrs (overcast)
<b>Full charge time</b>	6 hrs (direct sunlight)



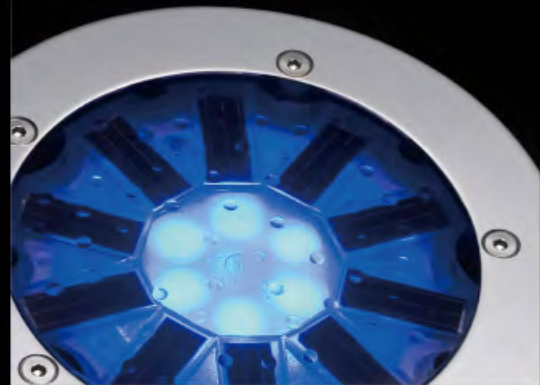
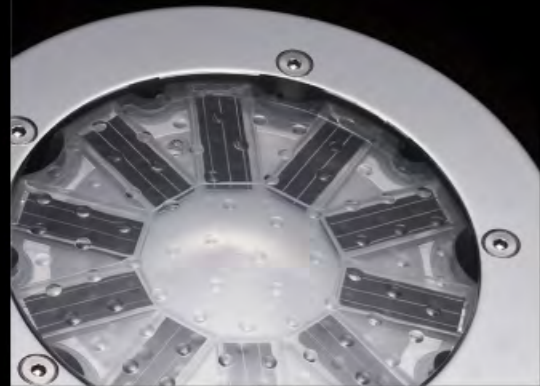
SH200C  
Color - Lux (average)  
White - 25, Amber - 25, Red - 50,  
Blue - 20, Green - 55



SH220C  
Color - Lux (average)  
White - 100, Amber - 120,  
Red - 120, Blue - 35, Green - 200

SH230C  
Color - Lux (average)  
White - 60, Amber - 45, Red - 40,  
Blue - 30, Green - 95





SH270C

## SH270C

- ground light

<b>Size</b>	Top diameter: 4.4" / 112 mm Bottom diameter: 3.83" / 97.5 mm H: 2.4" / 61 mm
<b>Weight</b>	0.45 kg / 1 lbs
<b>Housing</b>	Stainless Steel (SUS304), cast aluminum
<b>Lens</b>	GE super light permeable PC
<b>Lighting output</b>	Permanent
<b>LED pcs</b>	6 pcs
<b>Finish</b>	Brushed/polished stainless steel

<b>Switch</b>	Auto
<b>Operation time</b>	Minimum 12 hrs (fully charged) 4-8 hrs (overcast)
<b>Full charge time</b>	6 hrs (direct sunlight)

## SH260C

- ground light

<b>Size</b>	Top diameter: 4.4" / 112 mm Bottom diameter: 3.83" / 97.5 mm H: 2.4" / 61 mm
<b>Weight</b>	0.45 kg / 1 lbs
<b>Housing</b>	Stainless Steel (SUS304), cast aluminum
<b>Lens</b>	GE super light permeable PC
<b>Lighting output</b>	Permanent
<b>LED pcs</b>	6 pcs
<b>Finish</b>	Brushed/polished stainless steel

<b>Switch</b>	Auto
<b>Operation time</b>	Minimum 12 hrs (fully charged) 4-8 hrs (overcast)
<b>Full charge time</b>	6 hrs (direct sunlight)



SH260C

## Meteor - a name you can trust

Meteor is one of a few great names to sponsor the DOE's 2009 Solar Decathlon. National Renewable Energy Lab approved Meteor products for participation in the 2009 Solar Decathlon at the National Mall. Meteor is the only lighting company to sponsor this event.

### Official 2009 Solar Decathlon sponsors:

The American Institute of Architects, Applied Materials, BP, Honeywell, National Association of Home Builders, PEPCO, Dell, Dow Corning, JetBlue, Popular Mechanics, U.S. Green Building Council, National Geographic, Perkins & Wills, Meteor Solar LED Lighting.

The Solar Decathlon joins 20 college and university teams in a competition to design, build and operate the most attractive and energy-efficient solar-powered house. Meteor Lighting will install 105 pcs SH-170C (35 red, 35 blue, 35 white) on the main thoroughfare of the National Mall. Meteor Lighting has also formed a partnership with three of the university teams (Rice University, Penn State and Team California).

### Innovative Green Design Awards

Meteor Solar LED Lighting is a proud winner of the New York House magazine's "igda" competition in the Lighting category.

### Meteor's commitment

Meteor's commitment to environmental protection and consciousness is unprecedented. So join an expanding business community that thinks green. Meteor products are an ideal component for companies running projects that help meet LEED (Leadership in Energy and Environmental Design) certification. Meteor's vision and commitment is a long term one. As a result, Meteor will also take back all its products after their expiration for recycling.

#### - Make green choices

Protect our natural resources by using a clean and renewable energy source for local projects: Solar power.

#### - Save costs

Save on installation costs and energy bills.

#### - Give new life to public spaces

Inject new life into public and urban spaces with colorful, solar powered, LED lights that are Architectural Grade.



Meteor solar powered LED lights are used for patios, driveways, pool decks, plazas, business centers, hotels, parks and malls. They are an ideal choice for landscape and architectural lighting, especially since they are so easy to implement. Meteor allows architects and landscape artists to pursue their own ideas and creativity while respecting the natural around that surrounds them.

#### Architectural Grade Material Used

Meteor lights are designed with practicality and resilience in mind. The fixtures are made of high quality SUS304 Stainless Steel and cast aluminum, a material that not only remains attractive after years of use, but is also exceedingly durable and resistant to corrosion and extreme temperatures.

#### Long Lifespan & EDLC Technology

Meteor Solar LED products make use of the highest quality EDLC ultracapacitors available. With a ultracapacitor life-span of 7 to 10 years, as opposed to 2 to 3 years for standard batteries, Meteor products offer longevity and stability.

#### Perfect Ingress Protection rating

The Ingress Protection (IP) rating system expresses the degree of protection provided by enclosures against the intrusion of solid objects, dust and particles, and liquids. Meteor products are rated as IP-68, the highest possible, making them completely safe and waterproof for use in areas of heavy rain, dust, or other intrusive elements.

#### Low Voltage & Environmental Safety

CE certified and operating at low voltage (1.8V – 3.3V), Meteor products are totally safe from electric leakage and can be used near areas such as fountains and pool decks without risk.

#### Ease of Installation

Meteor products are so easy to install that neither trenching nor re-paving is required. With no wiring and transformer, there is also no need for an electrician.

#### Easy Replacement & The Innovative Anchor Plate Design

Meteor Solar LED lights accessory anchor plates are designed to meet special needs. In areas with subsurface water levels, uneven settling of soil, erosion or other such unusual conditions, these plates can be used to firmly anchor the lights so that they do not protrude above the surrounding area over time. The plates can also act as anti-theft devices.

Easy to replace without needing to re-pave or concrete, Meteor Solar LED products are fully RoHS compliant. In addition, not only are the products 95% recyclable, Meteor offers a recycle service after 7-10 years product life time.

#### Zero Maintenance or Energy Costs


Since they are Solar-Powered, Meteor products do not require maintenance, do not incur energy costs, are immune to power outages and are CO<sub>2</sub> emissions-free as well.

#### High Load Tolerance

Meteor lights have a very impressive load tolerance, allowing up to 2800 lbs of direct force for the ground lights and 9900 lbs for the paver lights. This strength allows them to withstand vehicles of over 4 and 16 tons respectively.

#### Uses and Applications

Patios	Fountains	Malls	Campus
Driveways	Lawns	Cruise ship	Parks
Walkways	Gardens	Sidewalks	Landscaping
Pool Decks	Rooftop garden	Crosswalks	Roadway Lighting
Stairways	Plazas	Bridges	



**ILOS Corporation** *(North American Distributor)*

phone: (213) 255 2060

fax: (213) 596 3704

add: 218 Machlin CT., Walnut, CA 91789

mail box: 19745 Colima Road #1-807, Rowland Heights, CA 91748-3219

email: [marketing@meteor-lighting.com](mailto:marketing@meteor-lighting.com)

[www.meteor-lighting.com](http://www.meteor-lighting.com)