



eDMX and TUBE

Operators Manual



Avolites eDMX transmitted data to each pod of the "London Eye" New Years Eve 2003 ~ Control Consoles were the other side of the Thames

Useful Avolites phone numbers:-

Avolites England

Sales and service* (+44) (0) 20 8965 8522

Service out of hours*(+44) (0) 78 3117 8888

Fax (+44) (0) 20 8965 0290

Email salesone@avolites.com

Website <http://www.avolites.com>

Distribution of Avolites products in USA:-

Avolites America

Sales and service* (+1) 423 938 2057

Fax (+1) 423 938 2059

*Before contacting Avolites for service enquiry please ensure that you have the product serial number and the Software version.

The latest version of this manual (in Microsoft Word or PDF format) and Console Software can be downloaded from the website www.avolitesdownloads.com

The small print :

No Liability for Consequential Damages

Avolites has a policy of continuous product and documentation improvement. As such the detail within this manual may not match the operation of the product this manual describes.

In no event shall Avolites be liable for any direct, indirect, special, incidental, or consequential damages or loss whatsoever (including, without limitation, damages for loss of profits, business interruption, or other pecuniary loss) arising out of the use or inability to use the product this manual describes even if Avolites Ltd. has been advised of the possibility of such damages. Because some jurisdictions do not allow the exclusion or limitation of liability for consequential or incidental damages, the above limitation may not apply to you.

Reprint and revision history:

First version CC 10 May 2004

RS Imported to Avolites Template 10 May 2004

Uploaded to web 10 May 2004

1. AVO EDMX MANUAL	4
1.1 About	4
2. HOW TO SET UP AN EDMX SYSTEM FROM OUT OF THE BOX.	5
1.2 Working with the Tubes	5
1.3 TUBE facilities and connectors.	6
1.4 Connecting the Tubes to a PC.	7
1.5 Configuring the Tubes	12
1.6 Changing a TUBE from an Encoder to a Decoder and back again	13
3. WORKING WITH THE WAP	15
1.7 Configuring the WAP	16
4. A NOTE ON OTHER WIRELESS NETWORKS.	17
5. RUNNING A SHOW	17
6. SYSTEM CONFIGURATION OPTIONS.	18
1.8 Simple point to point	18
1.9 Multiple receivers from 1 transmitter.	18
1.10 Multiple Universe through 1 WAP	18
1.11 Multiple universes split across multiple waps	19
1.12 Extending WAP's using cable	19

1. Avo eDMX Manual

1.1 About

eDMX was designed to allow users to construct a wireless network over which dmx could be streamed to enable said users to get over obstacles that otherwise prevented them from deploying lights in certain locations.

The hardware and software were designed by dAFTdATA Ltd for Avolites Limited.

dAFTdATA have considerable experience within the IT networks world as well as lighting industry working in the fields of design and installation.

Avolites have considerable experience with the manufacture of lighting related products, as such it seemed a natural partnership.

eDMX is designed to allow people everywhere to use the now readily available IEEE standard of 802.11 wireless Ethernet as a transport mechanism for USITT DMX 512.

The construction of a simple wireless network allows users to send their dmx wirelessly within the constraints of the wireless network instantly with no response difference from that of using cables.

As the standard for 802.11 differs for countries across the world respectively it is the responsibility of the user to familiarise themselves with the available local frequencies and to work with them accordingly.

Wireless Ethernet 802.11 systems can cause interference to and receive interference from amongst other things:

- Other Wireless Ethernet Systems
 - Microwave Ovens
 - Bluetooth enabled devices
 - Some football stadium floodlight ballasts
 - Cordless Analogue and Digital Telephone Systems
- Finally as a word of precaution, eDMX systems should ONLY be used where it is not possible to run cable systems.

2. How to set up an eDMX system from out of the box.

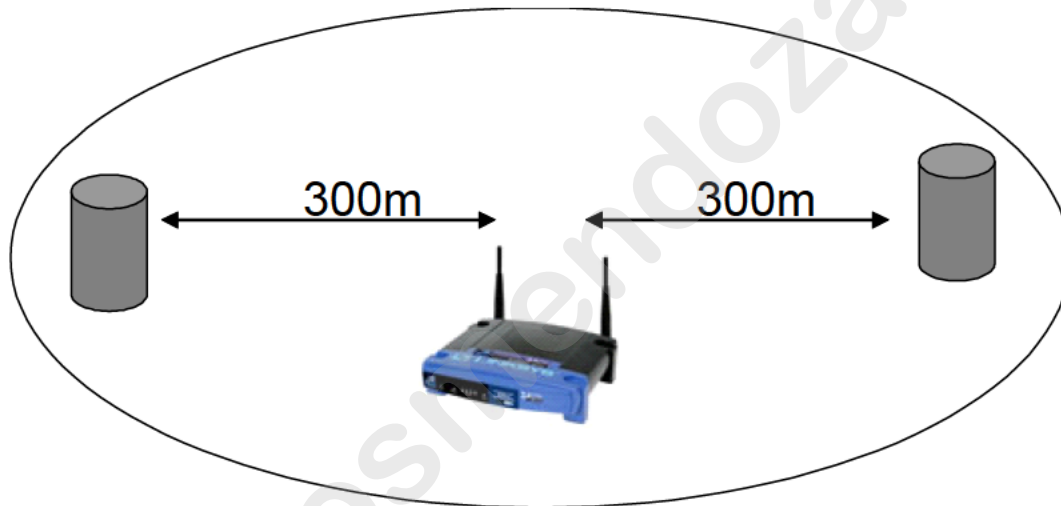
The Avolites eDMX kit is shipped containing the following components:

- 2 eDMX Tubes
- 1 Wireless Access Point (WAP)
- 3 Mains Cables
- 2 eDMX Serial Configuration Cables

Overview of the equipment:

- eDMX Tube: A device that takes in USITT DMX 512 and converts the data into IP (Internet Protocol) packets embedded within Ethernet Frames for delivery across a wireless Ethernet system.
- Wireless Access Point (WAP): A device that allows for the construction of an infrastructure topology wireless Ethernet system. The WAP acts as the central point for the wireless network.

The standard twin aerials of the Linksys WAP provides a diversity system that allow for the signal to radiate in a circular fashion out from the WAP. Provided the Tubes are placed within this area of coverage the system will work.



One Tube is preconfigured to act as an encoder and one as a decoder. To enable the system to work from the box the following steps need to be followed:

- Connect the Tube labelled as the encoder to the lighting console.
- Connect the Tube labelled as the decoder to the lighting fixtures
- Install the WAP and power up.
- Power up the Tubes

The system should now transfer the dmx data from the encoder to the decoder seamlessly. If the system seems to be performing less than perfectly it might be that your system is experiencing interference from another wireless network, to overcome this move to the section on configuring the WAP and switch to another frequency.

1.2 Working with the Tubes

Some key points regarding the design of the Tubes:

- The Tubes are designed to be the entry and exit points for the dmx data working over the wireless network.
- A wireless network as a single entity can support up to 250 Tubes.

- It is possible for a Tube to act as either an encoder or a decoder
- It is possible to have one encoder talking to 249 decoders on the same wireless network.
- It is possible to have 4 encoders talking to 60 decoders each all on the same wireless network.
- It is possible to extend the system to cover more than 4 universes by the addition of more wireless access points and the subsequent creation of more wireless networks.

1.3 TUBE facilities and connectors.

- Mains voltage inlet connector: Provides a means to connect the Tube to a mains power supply in the range of 90-260 v(AC)
- DC connector - for battery usage: Allows for the power for the Tube to come from a DC battery source, this provides excellent range checking facilities of the Tubes. The suggested battery supply is a PP9 battery.
- XLR Input connector – for usage when the Tube is acting as an encoder
- XLR Output connector – for usage when the Tube is acting as a decoder
- RS232 port – for usage as an initial configuration connection. The usage of RS232 allows for the Tube to be configured by connection to any computer with an RS232 9 pin Serial port, or via USB with the appropriate converter.
- 3 stack LED indicator – for analysis of system operation. The three LED's provide indication of termination, data receive or transmit rate, and system status.
- Mode LED indicator – provides "at a glance" indication of encoder/decoder selection
- Terminator Switch – to enable termination of the dmx line, when the Tube is in encoder mode and is in line after some fixtures that require termination.

Before shipping the Tubes are preconfigured to with their factory settings that allows for usage straight from the box.

If the Tubes are to be used in a different configuration or in conjunction with another system, or simply to extend the functionality of an existing system then the Tubes must be reconfigured accordingly.

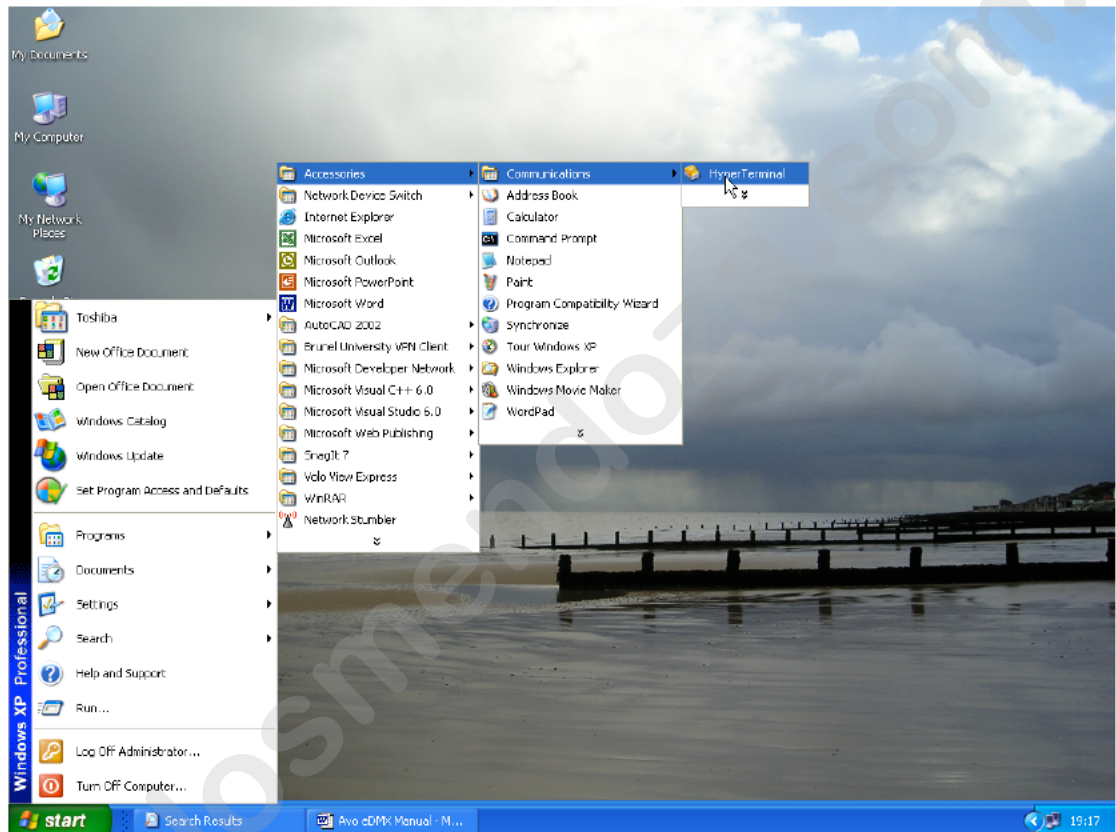
The configuration of the Tubes is dealt with overleaf...

1.4 Connecting the Tubes to a PC.

The first operation that must be performed when reconfiguring the Tubes from their default shipping configuration is the connection of the Tube to a hyperterminal session on a suitable PC.

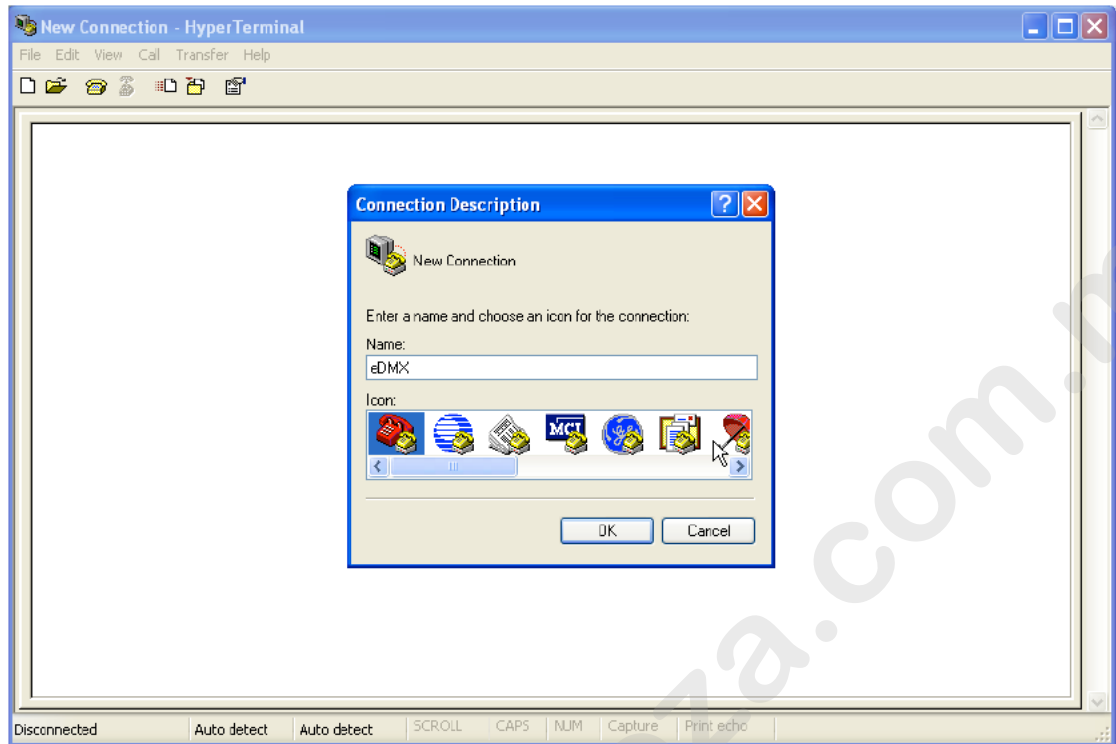
The Tubes require no special configuration software, instead they utilise the HyperTerminal session software which is shipped with Microsoft Windows.

This can be found under any normal installation of Windows under the Start- Programs – Accessories- Communications sub menu choices.



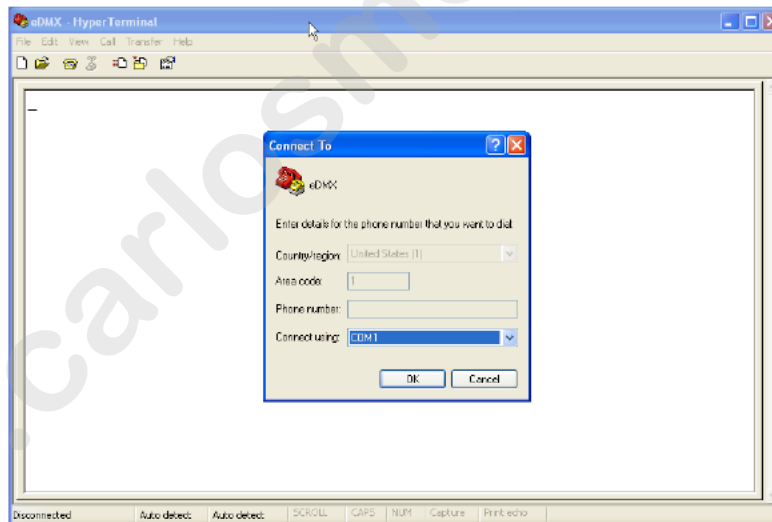
The user must connect the dedicated RS232 cable supplied with the Tubes to a PC running Windows and with an available 9 pin serial port. If a 9 pin port is not available then a USB port can be used with a suitable USB to RS232 converter.

Once the serial cable is connected between the computer and the Tube, and both systems are powered up, a Hyper Terminal session may be started.

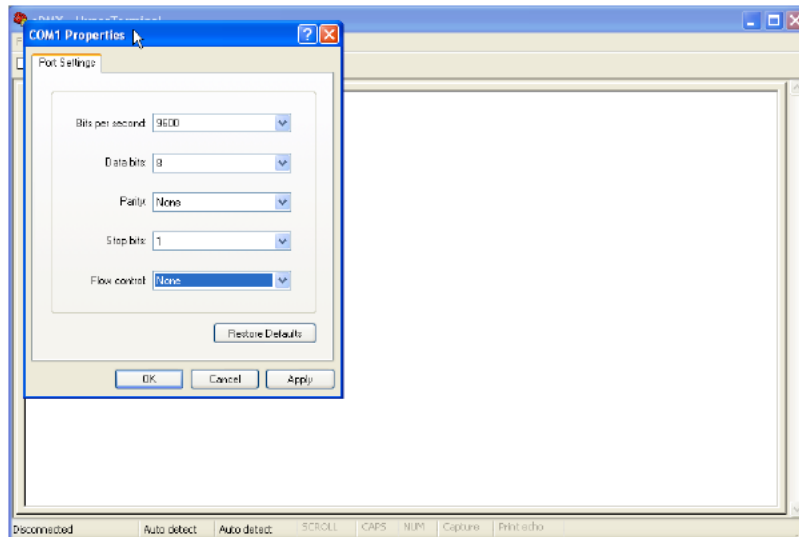


Firstly a name for the session is required, this can be anything, but if the user is planning on reconfiguring the Tubes on a regular basis then an easily remembered name such as eDMX is ideal.

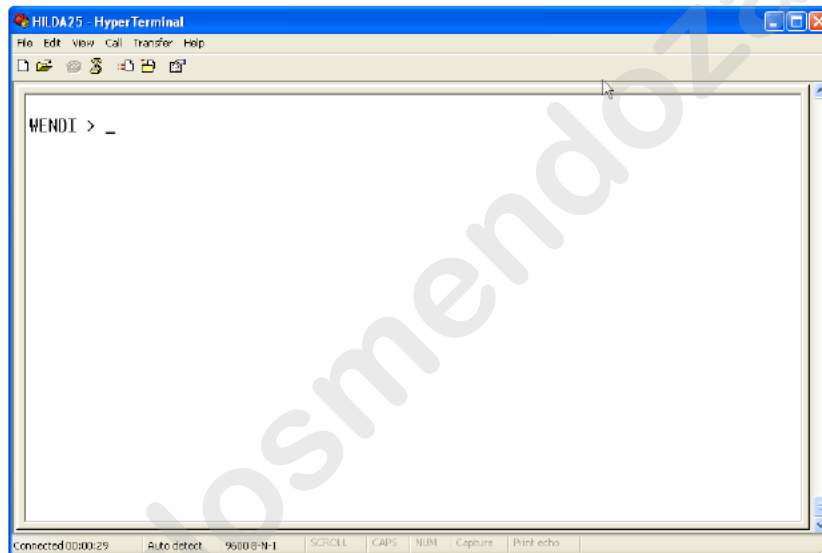
Next you must set the hyperterminal parameter to use the COM port that you have connected the RS232 cable to.



Next the hardware parameters have to be detailed, these are as shown below.



Finally when a successful connection is made then the user should be able to bring up the WENDI prompt as shown below by depressing the return key on the attached computer's keyboard.



Now that the Tube is in contact with the hyper terminal interface, it may be configured as to the user's specification.

The Tube has a simple RS232 interface which allows it to accept and display configuration data from command prompt style instructions. The interface has been developed to allow communication in a manner similar to the configuration scripts of most network switches.

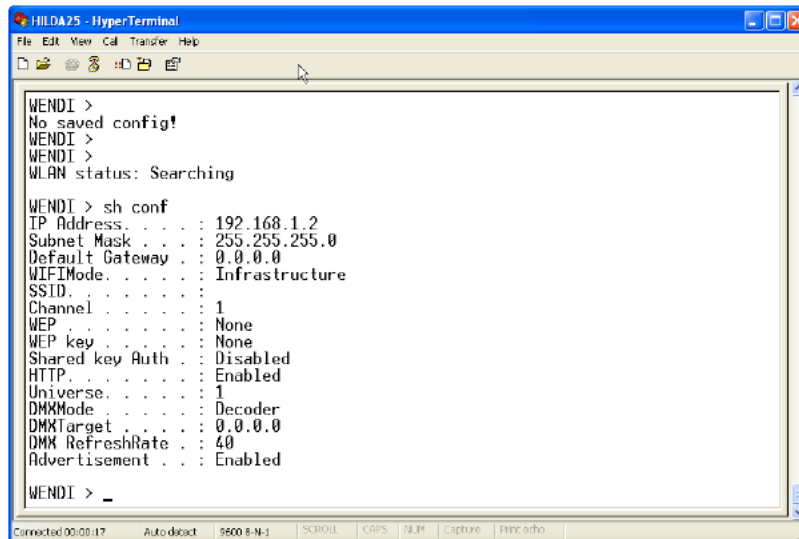
To start with it is suggested that on the PC connected to the Tube, that the user types:

sh conf

The **sh** represents an abbreviated show command.

The **conf** represents an abbreviated configuration command.

The user should be presented with the following detail.



```
WENDI >
No saved config!
WENDI >
WENDI >
WLAN status: Searching

WENDI > sh conf
IP Address . . . . : 192.168.1.2
Subnet Mask . . . : 255.255.255.0
Default Gateway . : 0.0.0.0
WIFIMode . . . . : Infrastructure
SSID . . . . . :
Channel . . . . . : 1
WEP . . . . . : None
WEP key . . . . . : None
Shared key Auth . : Disabled
HTTP . . . . . : Enabled
Universe . . . . . : 1
DMXMode . . . . . : Decoder
DMXTarget . . . . : 0.0.0.0
DMX RefreshRate . : 40
Advertisement . . : Enabled

WENDI > _
```

We will now detail each line respectively:

IP Address

This is the IP address of the unit. One of the benefits of the eDMX system is that it utilises full IP addresses which enable the routing of the eDMX data across all kinds of switched and unswitched networks.

The IP address is the unique identifier for the Tube.

No two Tubes or devices should be given the same IP address on the same network.

IP addresses work like a fixture address in moving light terminology, instead of giving each Tube a start address we give each one a unique number, thus we can tell the network that Tube 1 is an encoder and Tube 2 is a decoder.

The available IP addresses are 192.168.X.1 through 192.168.X.250

X can be configured by advanced users to something other than 1, but the default is 1 and we strongly recommend that you keep with this unless there are good reasons to change.

The address 192.168.1.255 is reserved and as such should never be used as an IP address of a Tube.

Subnet Mask

This is a TCP/IP specific detail and should only be changed from its default of 255.255.255.0 by experienced users.

Default Gateway

This is a TCP/IP specific routing detail and should only be changed from its default of 0.0.0.0 by experienced users.

Wifi Mode

Wifi Mode specify the topology of the wireless network. The standard way is to use the system in Infrastructure mode, which utilises the WAP as a data marshal and signal booster. In Ad Hoc mode the Tubes communicate with each other directly, although this might sound easier with less things to go wrong the power of transmission and reception is seriously limited with the Tubes communicating with each other directly and every Tube must stay in communication with every other for the network to work. Finally by using the Infrastructure mode switching physical frequencies via the allocated channels within 802.11 can be performed simply by

assigning a new channel to the WAP as opposed to having to change every frequency manually on every Tube. More information on the WAP channel allocation can be found later on in this manual. We strongly recommend that you use Infrastructure Mode.

SSID

This is the Wireless networks SSID or name, it must be the same as the WAP and all other Tubes on the same network for every device to function accordingly. The default SSID is avolites (note that this is all lower case)

Channel.

This is the number of the 802.11 radio channel that should be used when the Tubes are being operated in Ad Hoc mode. You should not normally need to change this since it is automatically set when in Infrastructure Mode.

WEP

Wireless Encryption Protocol, it is possible to run the system with WEP enabled should you wish to protect the dmx data as it travels across the wireless network. Unless required we do not recommend using Encryption since this adds processing overhead and it is unlikely that anyone will wish to steal your DMX data!

WEP KEY

This is the same key code that the WAP has stored within its configuration and as such it must be entered exactly as the WAP has it stored. Finally you must either run a system that is WEP enabled or not WEP enabled you must never attempt to run boxes that are not WEP enabled on a WEP enabled wireless network.

Shared Key Authority

This is a wireless encryption protocol parameter and as such should only be changed by experienced users.

HTTP

This is the Hyper Text Transfer Protocol based Web Server that is embedded within the Tube. There are only two options for this parameter, those of enabled and disabled. If the web server is enabled it allows for status reporting to be achieved through a typical web browser such as Internet Explorer etc. The Web Server can detail the parameters of the Tube and allows a quick and easy means to access such information. We strongly recommend that the web server is kept enabled.

Universe

This is a number set by the user to distinguish one DMX universe from another when running multiple universes of DMX over the same wireless network. This parameter can be set from one to 10.

DMX Mode

This parameter specifies whether the Tube is to work in encoder mode or in decoder mode.

If in encoder mode the Tube will accept dmx data from a console via the male 5 pin XLR connector and encode the data onto the wireless network.

If set to decoder mode the Tube will decode the data from the wireless network and output DMX from the female 5 pin XLR. The green LED under the female 5 pin will be lit if the Tube is working as a decoder.

DMX Target

This is the target address of the decoder to which the encoder will send its data across the network to. The default target address is 192.168.1.255. The usage of the address ending with 255 dictates that the encoder will send the dmx data out to every decoder on the same network. If you only wanted the encoder to send the dmx data out to one specific decoder then you would enter the IP address of the decoder that is to receive the data here. Unless there are special circumstances you should leave the last number at 255.

DMX RefreshRate

If the Tube is acting as an encoder then it is possible to reduce the network traffic by reducing the refresh rate that the encoder accepts data from the console. The default setting is 40, which represents frames per second. It is possible to reduce this down to 10 when working with moving head fixtures without any noticeable degradation in the performance. However the usage of faster, more responsive DMX devices such as LED lights requires a refresh rate of 40 frames.

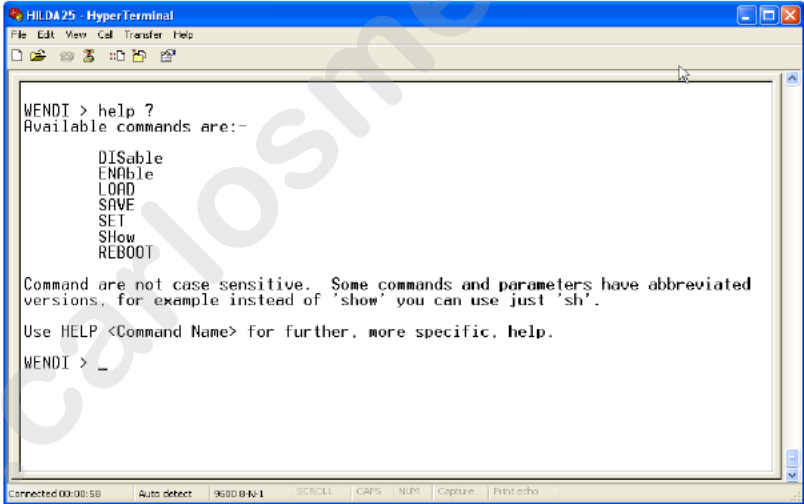
Advertisement

This is a WENDI specific message parameter and as such should not be changed.

1.5 Configuring the Tubes

To configure the Tube having connected to it via the RS232 port it is simply a case of using the command syntax.

If you type help ?



```
WENDI > help ?
Available commands are:-

    DISable
    ENable
    LOAD
    SAVE
    SET
    SHOW
    REBOOT

Command are not case sensitive. Some commands and parameters have abbreviated
versions, for example instead of 'show' you can use just 'sh'.

Use HELP <Command Name> for further, more specific, help.

WENDI > _
```

The Hyperterminal screen should detail the available commands, which are listed below:

Disable – Disables a parameter

Enable – Enables a parameter

Load – Loads a flash ROM file into the web browser

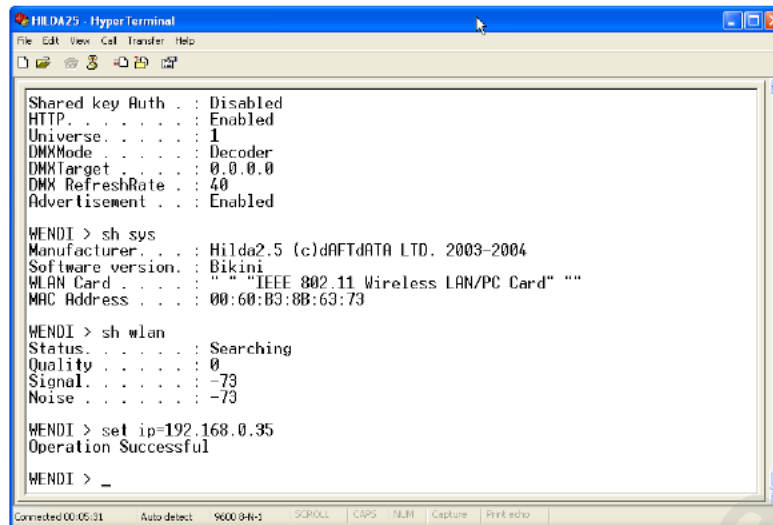
Save – saves the configuration to non volatile memory

Set – Sets the respective parameter

Show – details the relevant parameter

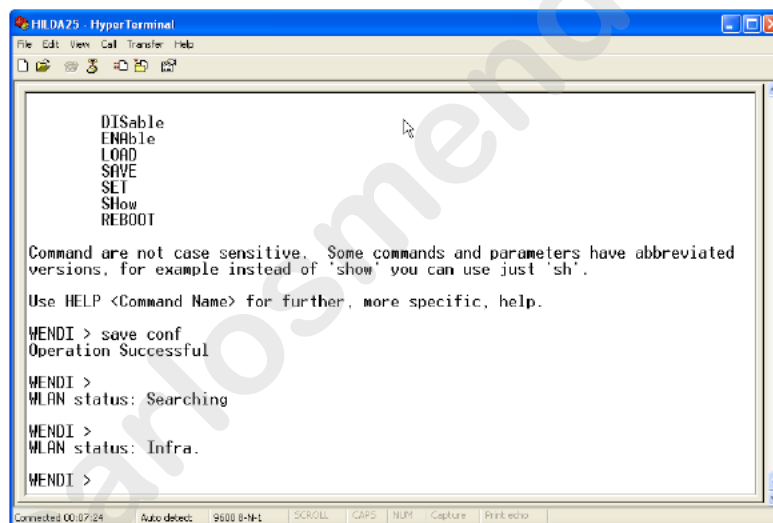
Reboot – restarts the system

So to set the IP address for the Tube to 192.168.0.35 you would type
"set ip=192.168.0.35"



It is now imperative that you save the configuration of the Tube at this stage, otherwise when you reboot the Tube the IP address change will be forgotten.

To do this type **"save conf"**



When the configuration has been saved the prompt will tell you that the operation is successful.

1.6 Changing a TUBE from an Encoder to a Decoder and back again

To set the Tube to decoder mode you simply type **"set DMXMode=decoder"**

Then type **"save conf"**

To set the Tube to encoder mode you simply type **"set DMXMode=encoder"** as shown below:


```
WENDI > set mode=s
Bad Parameter

WENDI > sh conf
IP Address . . . : 192.168.1.2
Subnet Mask . . . : 255.255.255.0
Default Gateway . . . : 0.0.0.0
WIFIMode . . . : Infrastructure
SSID . . . :
Channel . . . : 1
WEP . . . : None
WEP key . . . : None
Shared key Auth . . : Disabled
HTTP . . . : Enabled
Universe . . . : 1
DMXMode . . . : Decoder
DMXTarget . . . : 0.0.0.0
DMX RefreshRate . . : 40
Advertisement . . : Enabled

WENDI > set DMXMode=encoder
Operation Successful

WENDI > _
```

Now that the Tube knows that it is an encoder it is important to set the target address so that the Tube knows where to send the data.

The Tube can either send the data to a single other Tube or it can send its data to multiple Tubes through the usage of the local network broadcast address.

To send the data to one other Tube you would type set DMXTarget=IPAddress of receiver, so if we have two Tubes whose IP addresses are 192.168.1.1 and 192.168.1.2, if we make 192.168.1.1 the encoder we can set the target to be 192.168.1.2 and thus the encoder 192.168.1.1 will only send its data to 192.168.1.2.

If however we wish to send the data from one Tube to many others we would set the target address as w.x.y.255, so in the previous example we would set the target address to 192.168.1.255, this ensures that any Tube on the 192.168.1.X range between 192.168.1.1 and 192.168.1.250 will receive the same data.

So our command through the hyperterminal interface would look like:

```
WENDI > sh conf
IP Address . . . : 192.168.1.2
Subnet Mask . . . : 255.255.255.0
Default Gateway . . . : 0.0.0.0
WIFIMode . . . : Infrastructure
SSID . . . :
Channel . . . : 1
WEP . . . : None
WEP key . . . : None
Shared key Auth . . : Disabled
HTTP . . . : Enabled
Universe . . . : 1
DMXMode . . . : Decoder
DMXTarget . . . : 0.0.0.0
DMX RefreshRate . . : 40
Advertisement . . : Enabled

WENDI > set DMXMode=encoder
Operation Successful

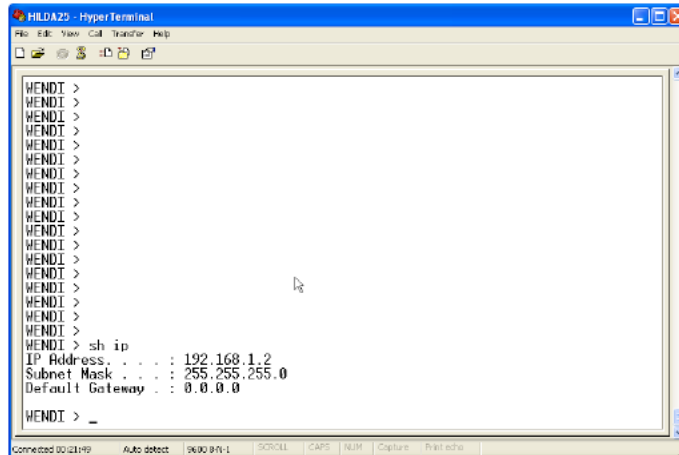
WENDI > set DMXTarget=192.168.1.255
Operation Successful

WENDI > _
```

Again at this stage it is imperative to save the config to non volatile memory using the "save conf" command

All other parameters are to be changed by experienced users only, as such this document will not detail every possible parameter change, however

more information can be found through the help files. To find help on any other parameter simply type show X, where X is the name of the parameter, for example show IP details the following:



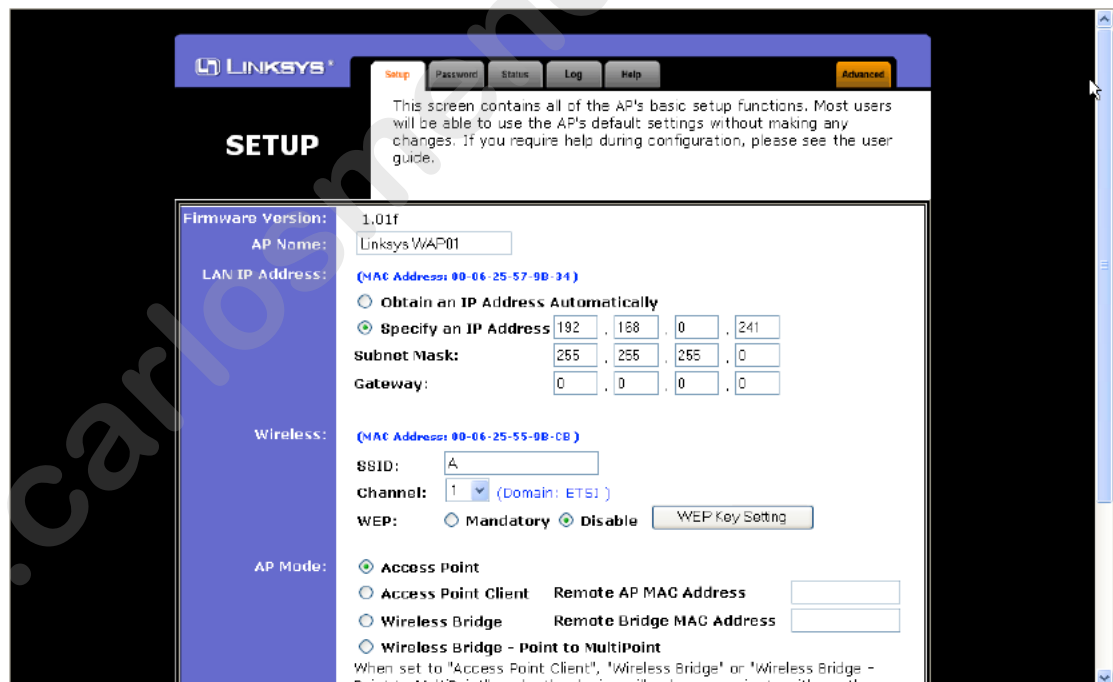
```

WENDI >
WENDI >
WENDI >
WENDI >
WENDI >
WENDI >
WENDI >
WENDI >
WENDI >
WENDI >
WENDI >
WENDI >
WENDI >
WENDI >
WENDI >
WENDI >
WENDI >
WENDI >
WENDI > sh ip
IP Address . . . : 192.168.1.2
Subnet Mask . . . : 255.255.255.0
Default Gateway . . : 0.0.0.0
WENDI > _
  
```

3. Working with the WAP

The WAP comes with its own configuration setup software which should be run according to the accompanying manual.

However, after connecting to the WAP either wirelessly or via a cable through a switch or cat5 cross cable it should be able to reach the web interface. For the Linksys WAP11 the interface should look like.



Here it can be seen that this WAP has its SSID set to A and its Channel is set to 1. If the SSID of the Tubes are also set to A then the system will work and the encoder Tube will route its airborne DMX data via the WAP, if there is any discrepancy it will not work, please note the SSID is cAsE SeNsItIvE.

The Channel is the physical frequency which the WAP operates on, there are different numbers of channels available in different countries around the world and it is the users responsibility to check that they are using a

legitimate frequency.

The key to the channel concept is that if you change the channel of the WAP then EVERY device on the same SSID will move channels.

So if you experience data corruption or interference whilst using the eDMX system you can instantly move to a clear channel. This ability to change channels during the show and 'on the fly' is one of the great advantages of the eDMX system above other similar systems and above traditional older wireless systems.

1.7 Configuring the WAP

The WAP should only ever need three parameters changing, these are the IP address, the SSID and the Channel.

NB The IP address of the WAP must be within the same range as the Tubes, so if the Tubes are 192.168.1.1 and 192.168.1.2 respectively then the WAP must be 192.168.1.X respectively. It is suggested that the numbers above 240 are used for WAP's so for example the typical WAP address range would be 192.168.1.240 through 192.168.1.249

Any time a change is made the change must be committed or applied to the WAP, if changing the WAP's IP address and viewing the WAP's configuration page through Internet Explorer then you will have to change the IP address in the IE address bar accordingly to reflect the new IP address.

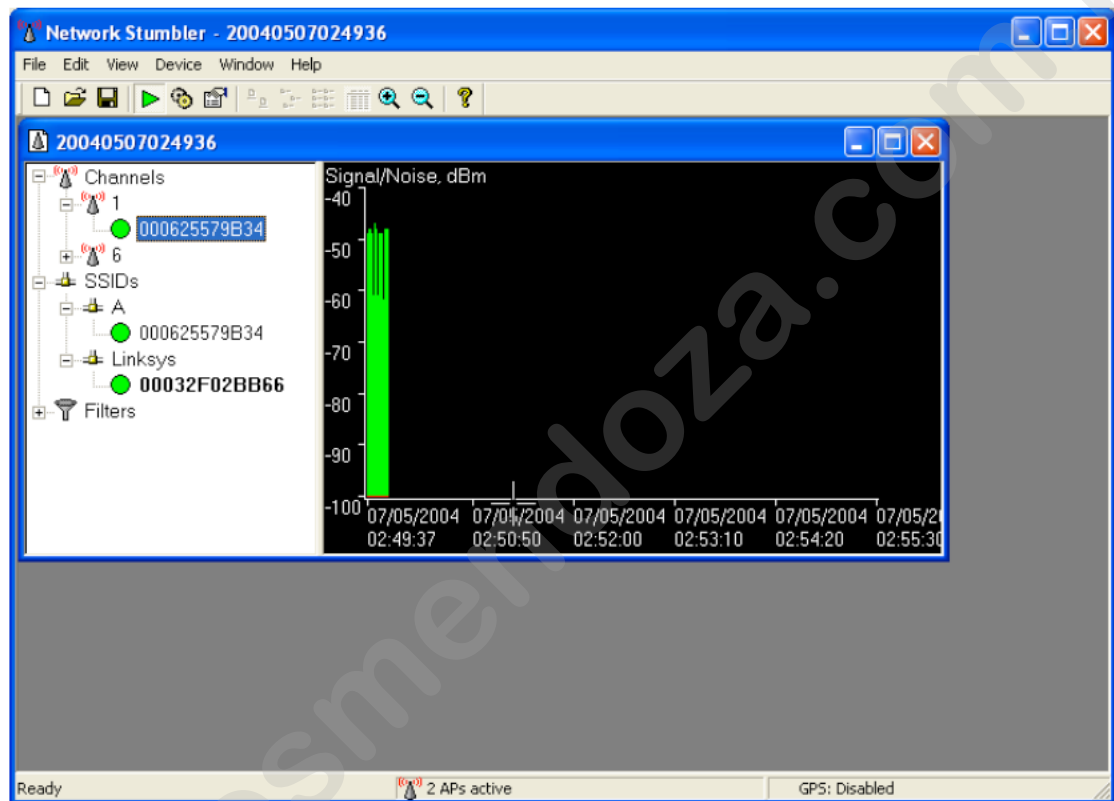
To Apply a change to the WAP you must scroll down to the bottom of the configuration utility and click on Apply.

A final note on changing the channels, although channels 1 and 2 are numerically different the physical frequencies which they represent overlap. Effectively for the UK there are only 3 channels that are complete non overlapping and independent, they are 1,6 and 11 and as such these are the only channels that are recommended.

4. A note on other wireless networks.

There is a tool available as freeware known as "network stumbler" This is a PC based package that allows you to discover other networks which might exist. The software is free and downloadable from www.netstumbler.com.

The software can be run on a laptop and shows instantly what channels are in use, the signal to noise ratio of the devices in question etc. It is highly recommended that this program is run on a wireless capable laptop at show time to show the presence of any other wireless networks.



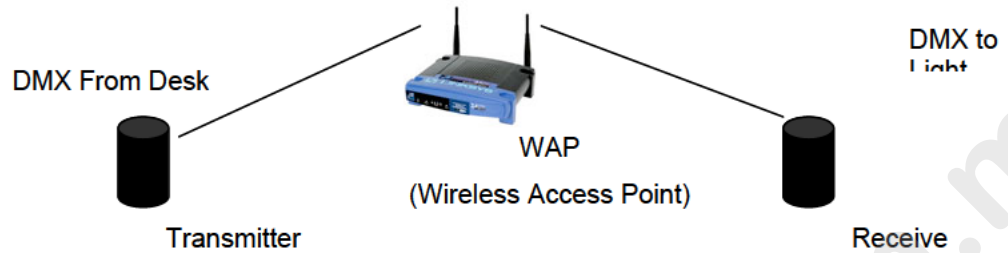
5. Running a show

To enable maximum flexibility at show time it is recommended that a wireless networked enabled laptop is present and running both the WAP configuration software and the latest version of netstumbler. This allows for identification of rogue wireless networks and offers the instant ability to switch channels instantly.

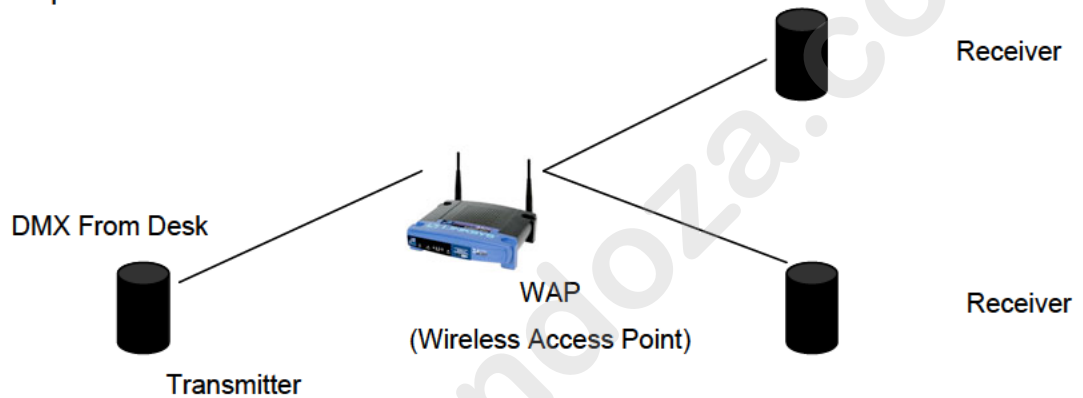
At the end of the day the likelihood of interference depends on where you are in the world. A wireless networks convention would not be the place to use a wireless network without the ability to switch channels instantly. Conversely an outdoor festival on an airfield would be ideal. The level of protection that you afford is dependant upon how much safety equipment and backup you deploy, if a cable can be run safely then this will *inherently* be more secure than any wireless system, however if there is the risk of damage to the cable or running it is impossible then the eDMX system gives you a highly secure system.

6. System Configuration Options.

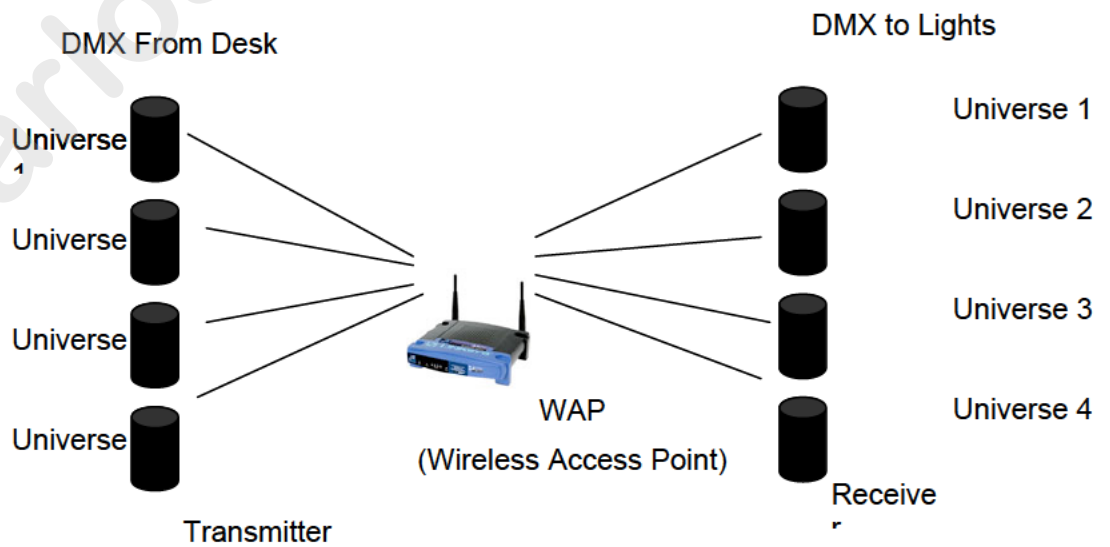
1.8 Simple point to point



1.9 Multiple receivers from 1 transmitter.

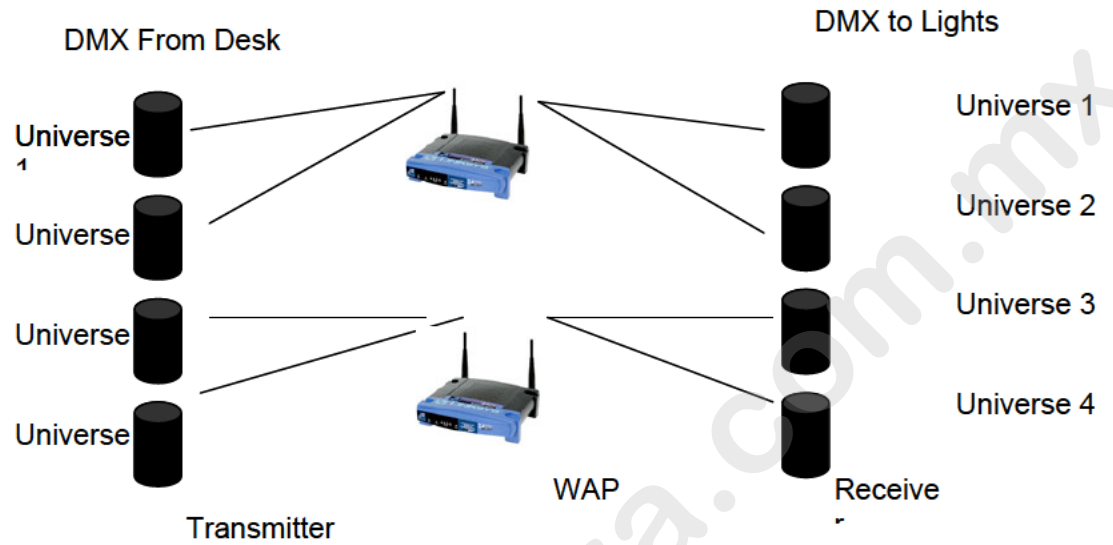


1.10 Multiple Universe through 1 WAP

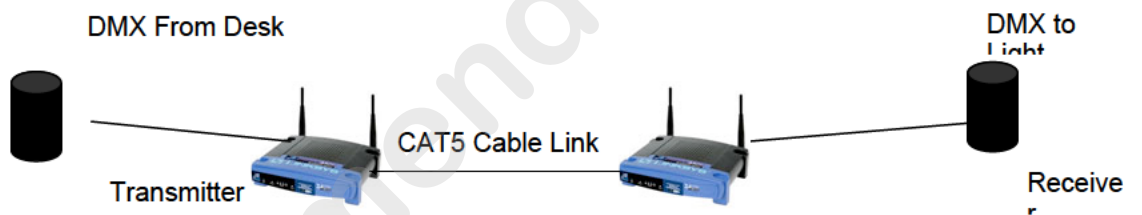


Up to 4 Universes can be run off of 1 WAP

1.11 Multiple universes split across multiple waps



1.12 Extending WAP's using cable



Extending WAP's using the Internet

